



# MAGNETICS CATALOGUE

[www.owolf.com](http://www.owolf.com)  
[sales@owolf.com](mailto:sales@owolf.com)

 **OLE WOLFF**

## COMPANY PROFILE

Ole Wolff was founded in 1983 in Denmark where it is still headquartered today. We have sales offices in eight locations worldwide, three R&D and application support centres and with ISO9001 and ISO14001 approved manufacturing facilities in Asia.

Ole Wolff is composed of two product divisions: acoustics and magnetics components.

## WHAT WE OFFER

Our magnetic product portfolio includes power inductors, transformers, chokes, line filters etc. serving a broad range of market segments from consumer to industrial electronics. We provide:

- rapid turnaround on custom samples.
- flexibility to meet your specific demands.
- a high level of expertise in providing customized solutions to meet your requirements.
- excellent local and global support from design through production.

## OUR FOCUS

### Technology

Our R&D team possesses a high level of expertise in the development and production of customized solutions based on our customers specific requirements.

### Quality

By controlling the entire QA process along with product development and manufacturing Ole Wolff ensures that your product will meet all the required environmental, reliability and life-cycle tests, as well as meeting the highest possible manufacturing quality and consistency.

### Communication

Good project management is at the heart of every successful project and key to this is good communication. Ole Wolff takes a proactive role to manage and track your project from start to finish in order to deliver the product at the right time, cost and quality.

### Cost

In order to be cost competitive Ole Wolff operates a unique lean model where we have minimized any unnecessary costs.

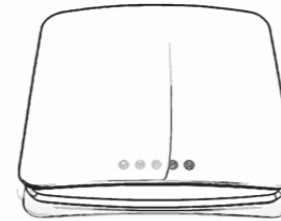
We focus our resources where they are needed and where they can add the most value.



## END PRODUCT APPLICATIONS

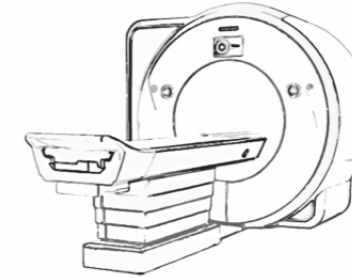
### BROADBAND GATEWAYS

Power Inductors  
CMC  
Transformers



### MEDICAL DEVICES

Inductors  
CMC  
Transformers  
Line Filters



### SMARTPHONES

HAC Coils  
Inductors



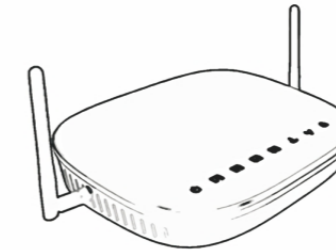
### HOME APPLIANCES

Power Inductors  
CMC  
Transformers



### MOBILE HOTSPOTS

Inductors



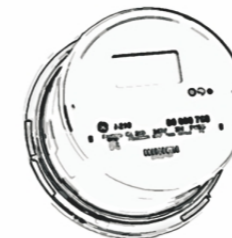
### SMOKE DETECTORS

Inductors  
Transformers



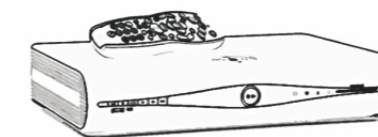
### SMART METERS

Power Inductors  
CMC  
Transformers



### MEDIA SET-TOP BOXES

Inductors  
Line Filters  
CMC  
Transformers

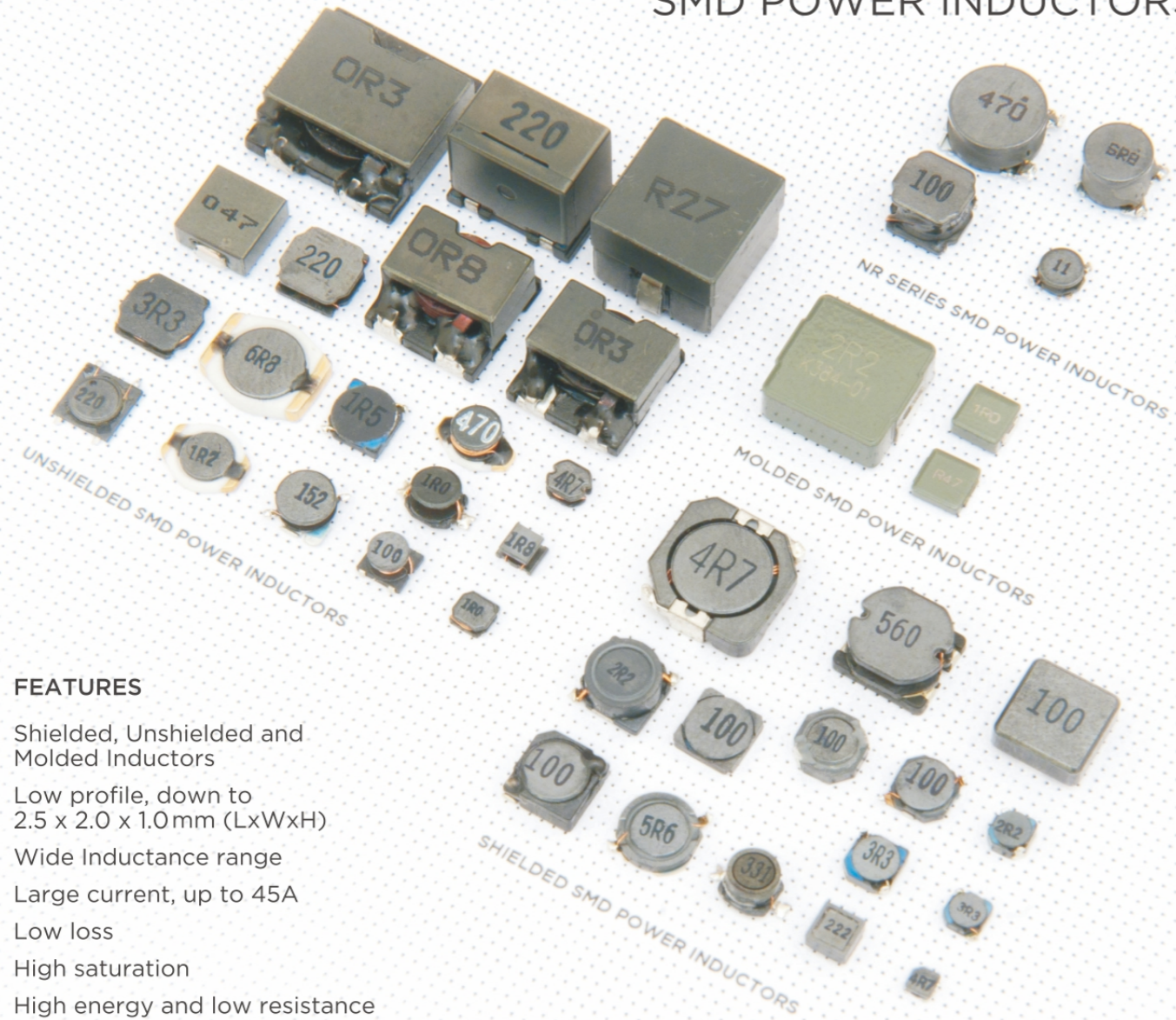


### PRINTERS

Inductors  
Line Filters  
CMC  
Transformers



## SMD POWER INDUCTORS



### FEATURES

- Shielded, Unshielded and Molded Inductors
- Low profile, down to 2.5 x 2.0 x 1.0mm (LxWxH)
- Wide Inductance range
- Large current, up to 45A
- Low loss
- High saturation
- High energy and low resistance
- Used in consumer electronic products such as television sets, satellite receivers, mobile telephones, notebook computers, etc



## POWER CHOKES AND INDUCTORS

### TOROIDAL FILTER FEATURES

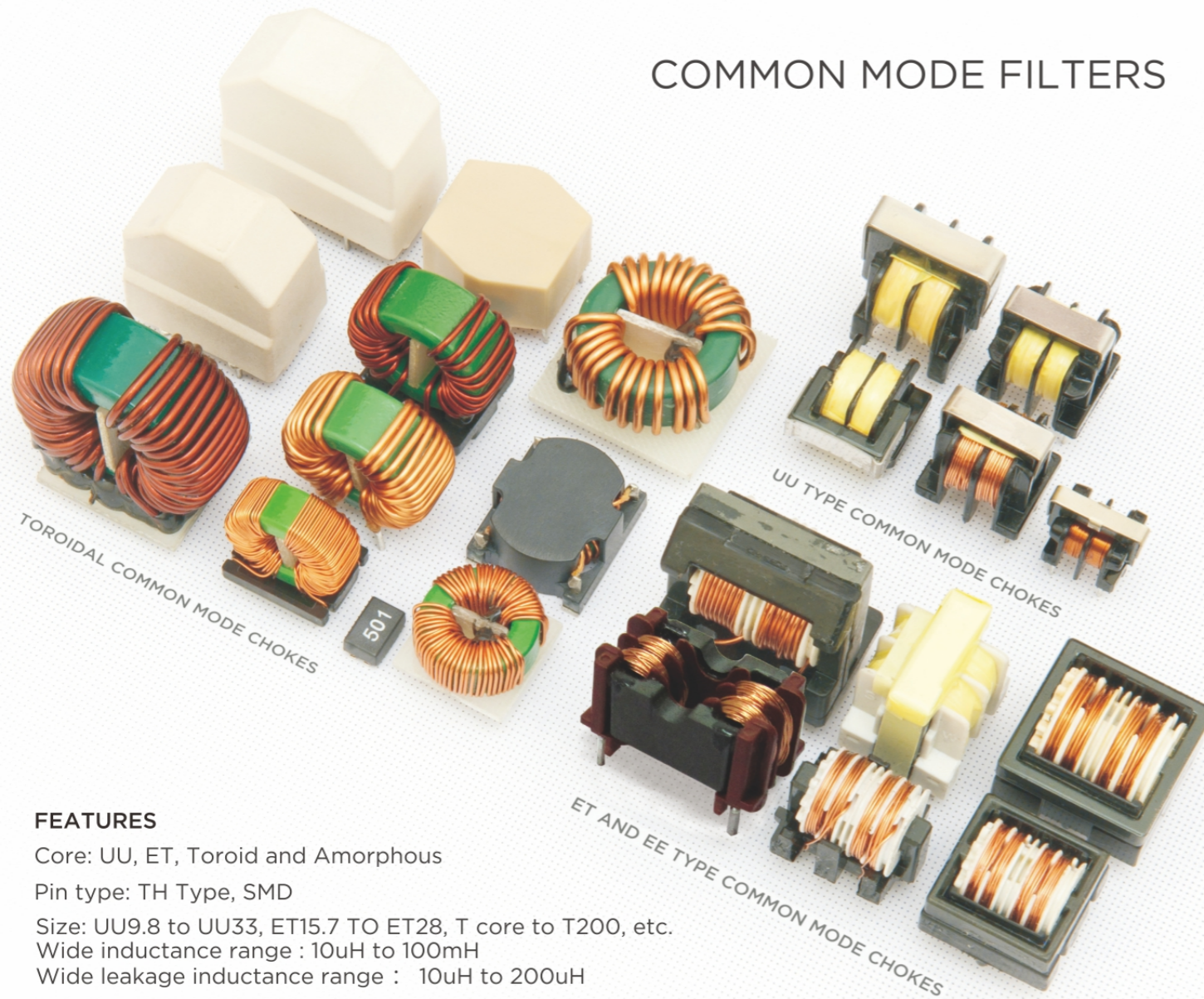
- Core: Toroid
- Pin type: TH Type
- Size: from T10 to T130
- Wide Inductance range
- High rated current
- Low DC resistance
- Used for EMI/RF suppression, SCR and triac controls, power supplies and power factor correction, etc



### RADIAL INDUCTOR FEATURES

- Core: DR
- Pin type: TH Type
- Min size, down to 4mm
- Low loss
- High reliability
- Wide inductance range 1.0µH to 47mH
- High rated current, up to 15A
- Used in consumer electronic products such as television sets, computers, electronic games consoles, etc

## COMMON MODE FILTERS



### FEATURES

Core: UU, ET, Toroid and Amorphous

Pin type: TH Type, SMD

Size: UU9.8 to UU33, ET15.7 TO ET28, T core to T200, etc.

Wide inductance range : 10uH to 100mH

Wide leakage inductance range : 10uH to 200uH

Rated voltage, 100-270VAC, 50Hz-60Hz

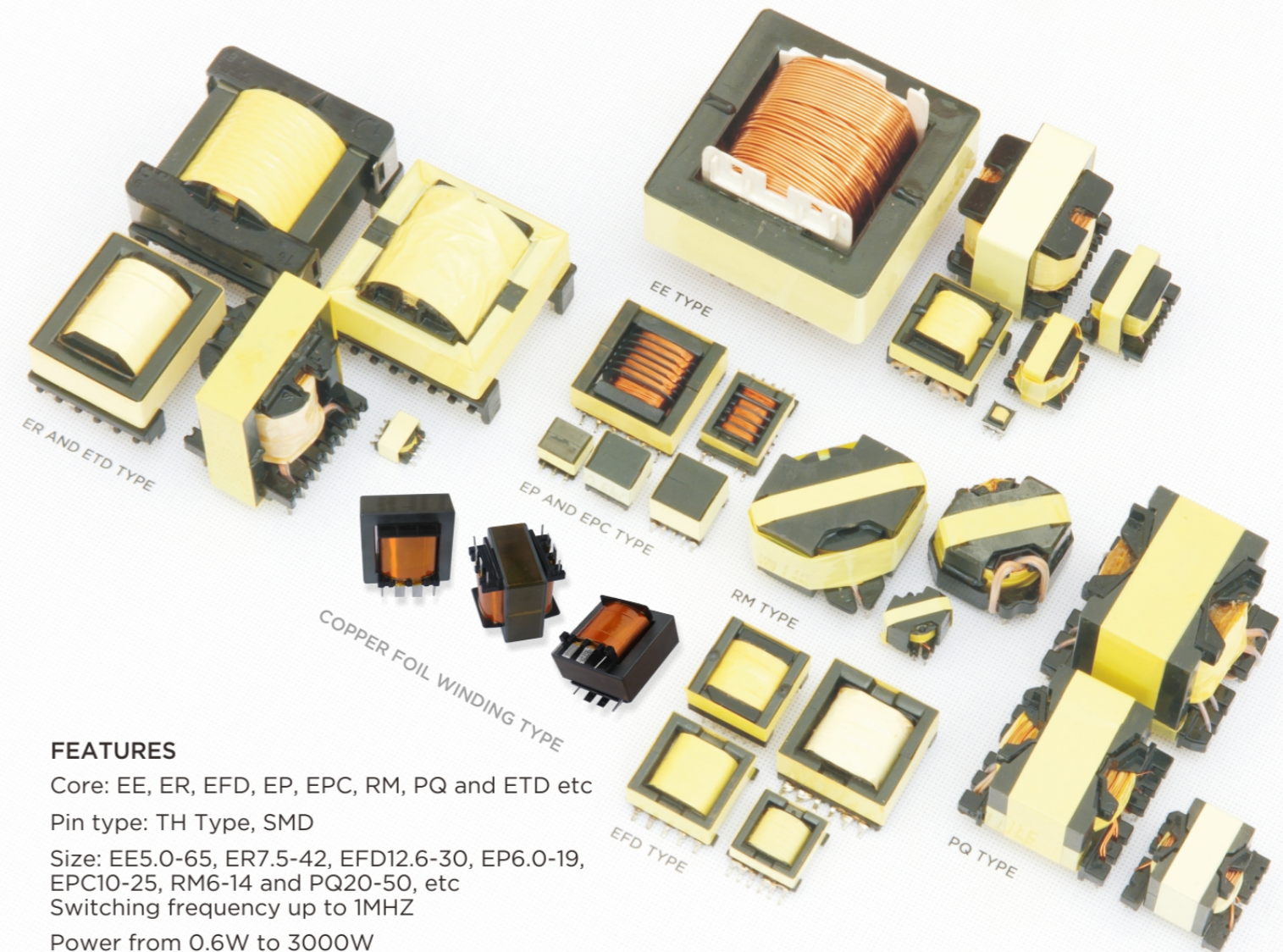
Insulation resistance: 100M ohms min, @500VDC

High stability inductance

Used in AC-DC power converters and EMI/RF suppression, etc



## HIGH FREQUENCY TRANSFORMERS



### FEATURES

Core: EE, ER, EFD, EP, EPC, RM, PQ and ETD etc

Pin type: TH Type, SMD

Size: EE5.0-65, ER7.5-42, EFD12.6-30, EP6.0-19, EPC10-25, RM6-14 and PQ20-50, etc

Switching frequency up to 1MHZ

Power from 0.6W to 3000W

Low loss

Low temperature rise. Meets UL OBJY2 class B and Class F insulation system

Used in power switches, AC/DC to DC converters, computers, television sets, and industrial power systems etc

## RJ45 CONNECTOR AND INVERTER TRANSFORMER AND CHOKE

### RJ45 CONNECTOR FEATURES

Comply with IEEE802.3 and EIA364  
 High performance on EMI suppression  
 POE function, ESD/Lightning protection  
 350uH Min.OCL with 8mA DC Bias

Voltage Rating: 48VDC

Current Rating: 100mA for magnetic

Contact Resistance: 30MILL OHM Max.

Speed: 10M/100M/1000M/10000M

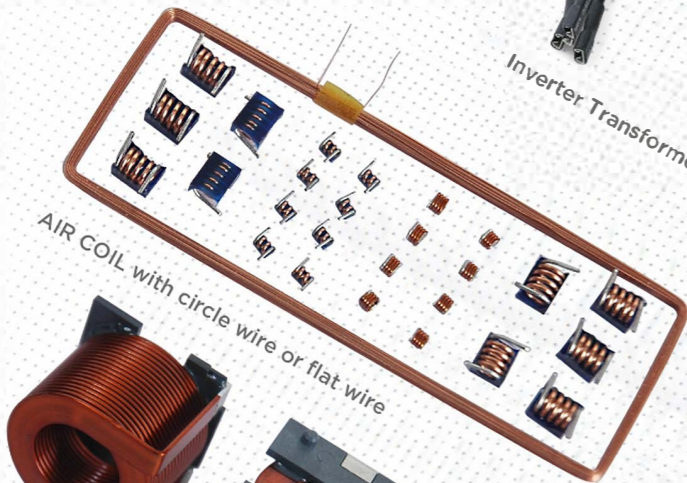
Suitable for CAT 5&6 fast Ethernet cable or better UTP

Applications: ADSL modems, cable modems,  
 Serves and video on demand.



RJ 45 with Transformer and POE

Inverter Transformer and Choke



AIR COIL with circle wire or flat wire



### SOLAR INVERTER TRANSFORMER AND CHOKE FEATURES

Core: Nanocrystalline

DC to AC, High performance

Power from 500W to 4000W

Application: Solar Photovoltaic Switches

### AIR COIL FEATURES

Temperature Class: Class A to Class H

Wire type: Circle and Flat

Pin types: TH Type , SMD

Shape: Circle, Square, Rectangle and Rhombus etc.

Size: from 0806 to 2215, custom dimension by customer



## NETWORK TRANSFORMER AND FLAT WIRE CHOKE

### NETWORK TRANSFORMER FEATURES

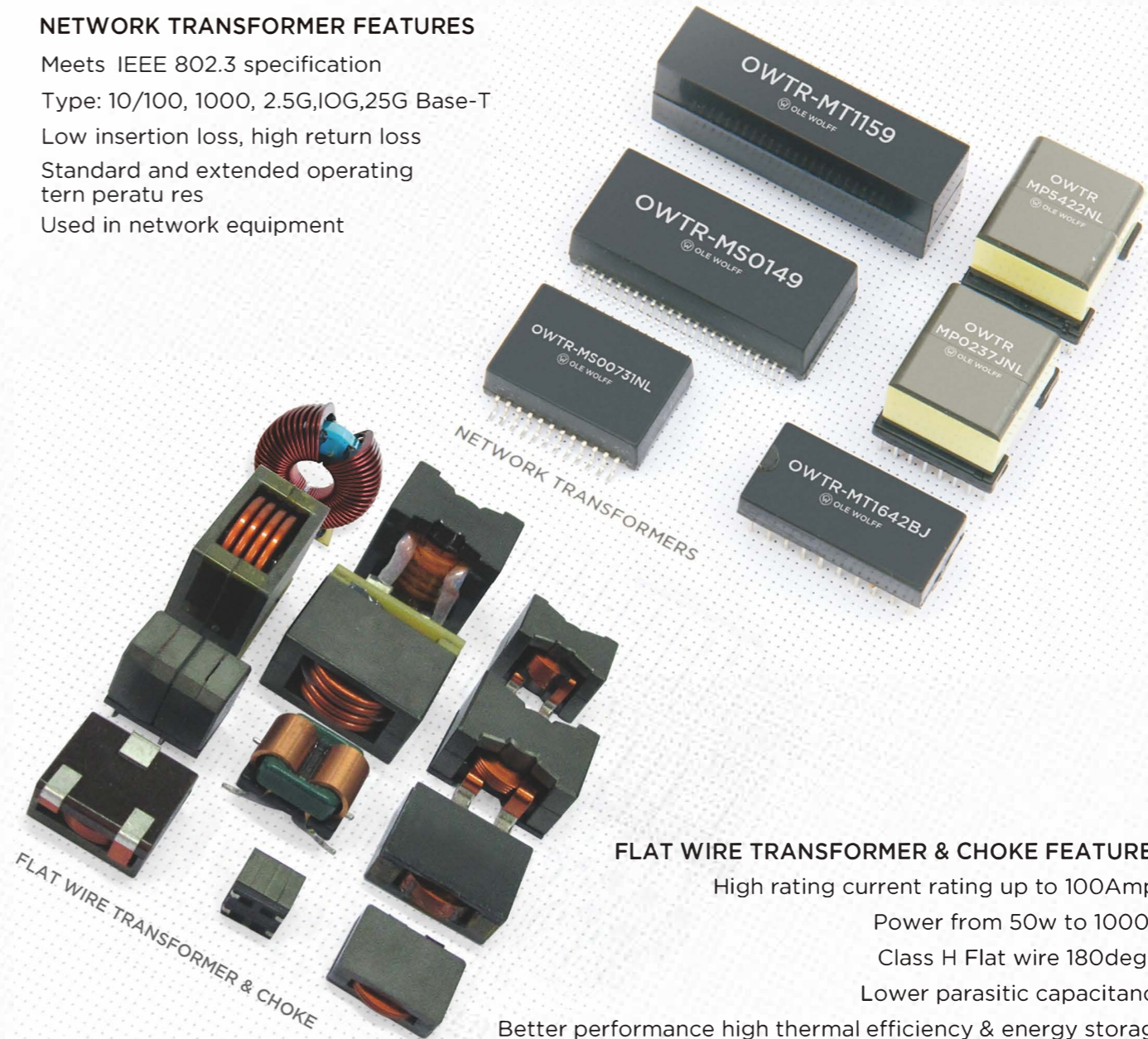
Meets IEEE 802.3 specification

Type: 10/100, 1000, 2.5G, 10G, 25G Base-T

Low insertion loss, high return loss

Standard and extended operating temperature

Used in network equipment



NETWORK TRANSFORMERS

FLAT WIRE TRANSFORMER & CHOKE

### FLAT WIRE TRANSFORMER & CHOKE FEATURES

High rating current rating up to 100Amps

Power from 50w to 1000w

Class H Flat wire 180deg.C

Lower parasitic capacitance

Better performance high thermal efficiency & energy storage

Used in switch mode power supplies, industrial power system etc.

# GLOBAL PRESENCE

**OLE WOLFF ELECTRONICS INC.**  
1015 MATHESON BLVD E UNIT 7  
MISSISSAUGA, ON L4W 3A4  
**CANADA**  
T: +1 416 953 5015



**OLE WOLFF ELECTRONICS INC.**  
1525 MCCARTHY BLVD, SUITE 1093  
MILPITAS, CA 95035  
**USA**  
T: +1 408 888 8413



**OLE WOLFF ELECTRONICS LTD.**  
3 BEDFORD STREET, WOBURN  
BEDFORDSHIRE MK17 9QB  
**UNITED KINGDOM**  
T: +44 (0) 1525 290755  
F: +44 (0) 1525 290855



**OLE WOLFF ELEKTRONIK GMBH**  
SCHULSTRASSE 15A  
DE-25451 QUICKBORN  
**GERMANY**  
T: +49 (0) 4106 765900  
F: +49 (0) 4106 627297



**OLE WOLFF ELEKTRONIK A/S**  
ROEDENGVEJ 25  
DK-4180 SOROE  
**DENMARK**  
T: +45 5783 3830  
F: +45 5782 0019

**OLE WOLFF ELEKTRONIK**  
YLIOPISTONKATU 26 A, P.O. BOX  
257 FIN-40101 JYVÄSKYLÄ,  
**FINLAND**  
T: +358 14 338 3050  
F: +358 14 338 3059

**OLE WOLFF ELEKTRONIK**  
52-200 Wysoka  
ul. Lipowa 11/7  
**POLAND**  
T: +48 (0) 691 261 105

**SHEN ZHEN OLE WOLFF ELECTRONICS CO., LTD.**  
FLOOR 5, BLOCK G, WEN TAO INDUSTRY ZONE,  
SHI YAN YING REN SHI VENUE, BAO AN DISTRICT,  
SHEN ZHEN , CHINA.  
**CHINA-SHEN ZHEN**  
T: +86 755 8261 2542  
T: +86 755 2640 6156

**OLE WOLFF (ASIA) LTD.**  
UNIT B, 19/F., BOLD WIN INDUST. BLDG.,  
NO. 16-18 WAH SING ST., KWAI CHUNG,  
N.T. HONG KONG.  
**CHINA-HONG KONG**  
T: +852 2424 3274  
F: +852 2424 2219



**OLE WOLFF (ASIA) LTD.**  
1179, SEC. 4, XINGLONG ROAD.,  
WENSHAN DISTRICT., TAIPEI CITY 116,  
TAIWAN (R.O.C.)  
**CHINA-TAIWAN**  
T: +886 928 548 068